

1 **Supporting Information for “Trophic Transfer of Dechloranes in the Marine Food Web of Liaodong Bay, North China”**

2

3

4 Hui PENG, Yi WAN, Kun ZHANG, Jianxian SUN, and Jianying HU*

5 MOE Laboratory for Earth Surface Process, College of Urban and Environmental Sciences, Peking University, Beijing 100871, China

6

7

8

9 Tables 2

10 Figures 2

11

12

13 This supporting information provides tables and figures addressing (1) Trophic levels, biological parameters and dechloranes concentrations of
14 23 gull individuals; (2) Recoveries (n=3) and method detection limits (MDLs) of dechloranes in sediments and biota samples; (3) Sampling
15 map of sediments, gulls and fish; (4) Stable nitrogen and carbon isotope values in different organisms.

16

17

18

19

20

21 **SUPPORTING INFORMATION TALBE S1.** Trophic Levels, Biological Parameters and Dechloranes Concentrations (pg/g ww) in 23 Gull

22 Individuals.

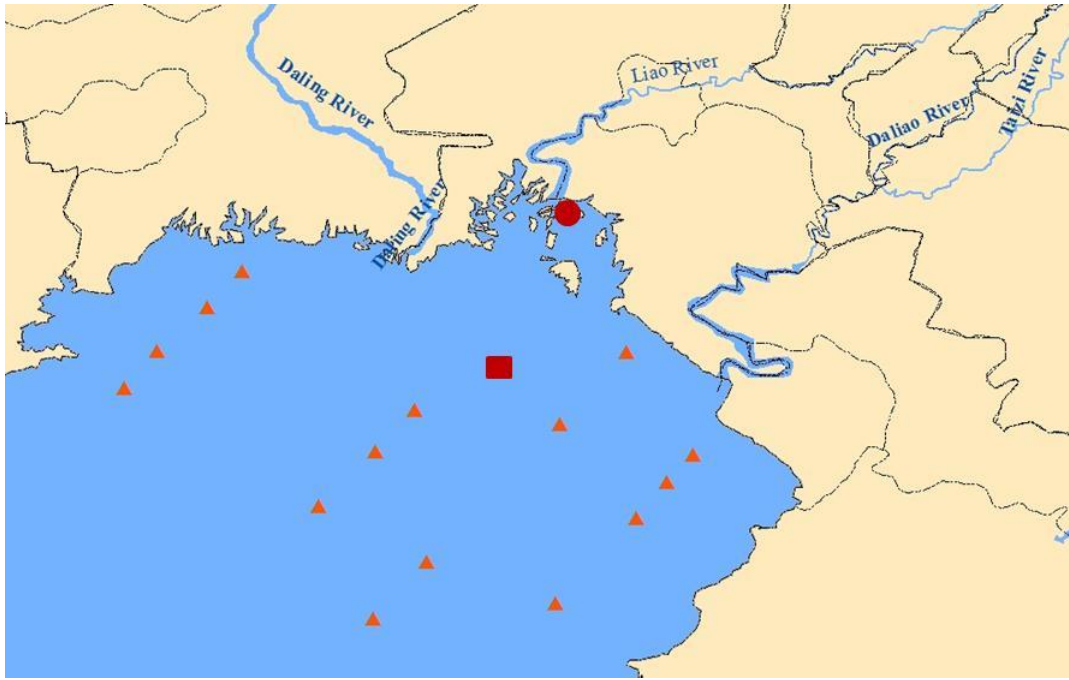
ID	TL	$\delta^{13}\text{C}$	$\delta^{15}\text{N}$	BW(g)	BL(cm)	mirex	Dec 602	Dec 603	syn-Cl ₁₁ DP	anti-Cl ₁₁ DP	syn-DP	anti-DP
LC-1	3.29	-22.36	12.50	1378	55	223	5.9	0.7	ND	ND	ND	0.7
LC-2	3.45	-19.19	13.09	822	46	435	10.9	ND	ND	1.9	1.9	3.4
LC-3	2.77	-25.01	10.50	578	46	53.3	3.0	ND	ND	ND	ND	ND
LC-4	3.60	-19.36	13.66	935	52	148	32.0	15.0	ND	5.8	3.4	33.4
LC-5	3.75	-18.70	14.22	1104	54	691	78.3	1.0	ND	10.4	2.2	12.3
LC-6	3.61	-16.81	13.69	342	37	652	24.5	0.4	ND	5.8	1.2	4.2
LC-7	3.79	-19.25	14.37	275	39	2070	83.8	5.0	ND	41.1	18.5	108
LC-8	3.82	-20.10	14.48	275	37	445	21.9	1.7	ND	9.3	1.8	11.1
LC-9	3.89	-18.95	14.75	326	41	1240	53.7	ND	ND	14.3	0.0	11.4
LC-10	3.49	-16.55	13.23	508	44	299	15.1	ND	ND	5.9	8.3	31.5
LC-11	3.63	-18.24	13.79	540	44	1150	75.4	22.0	ND	81.9	19.8	158
LC-12	3.76	-18.76	14.25	651	39	4780	57.9	5.7	1.8	16.8	15.4	86.4
LC-13	4.03	-21.10	15.30	527	40	5000	467	15.1	7.6	107	35.2	177
LC-14	4.00	-19.20	15.17	626	40	1340	88.0	2.2	ND	19.6	5.4	30.3
LC-15	3.38	-18.88	12.81	998	54	245	39.9	1.8	ND	14.4	2.5	15.7
LC-16	3.46	-17.65	13.12	450	37	700	89.1	1.5	ND	22.9	10.5	55.4
LC-17	3.52	-18.15	13.34	977	59	936	135	1.7	0.4	7.7	2.8	12.6
LR-1	3.92	-21.05	14.87	319	32	1270	29.8	ND	ND	7.7	5.4	21.7
LR-2	3.67	-14.72	13.92	334	34	4100	209	9.7	ND	107	22.0	137
LR-3	4.15	-18.87	15.76	296	31	748	69.0	71.8	ND	23.5	3.4	36.9
LR-4	3.29	-21.37	12.47	531	38	260	7.0	6.6	ND	11.1	7.2	8.5
LR-5	3.86	-21.05	14.64	277	35	6200	517	8.6	ND	138	34.4	348
LR-6	3.51	-20.94	13.31	307	32	1427	69.7	10.7	ND	49.3	26.7	155

23 BW, body weight; BL, body length; ND, not detected.

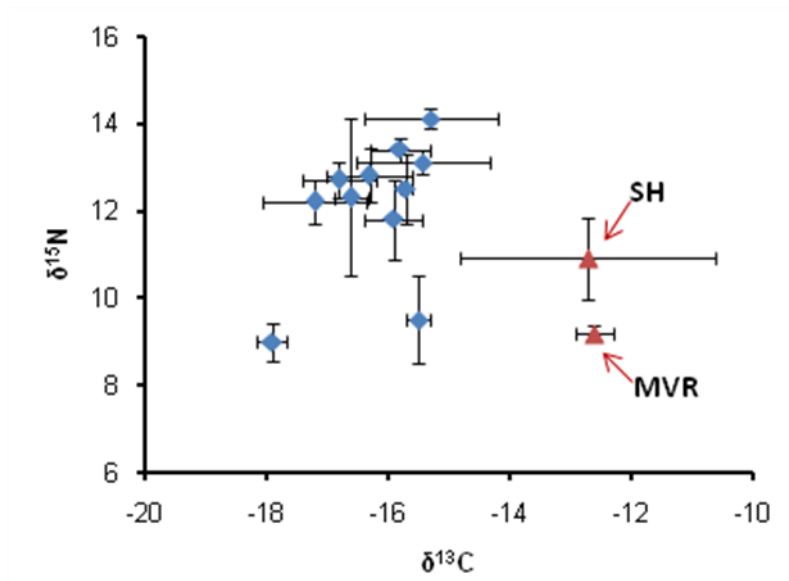
24 **SUPPORTING INFORMATION TALBE S2.** Recoveries (n=3) and Method Detection
 25 Limits (MDLs) of Dechloranes in Sediments and Biota Samples.

	Sediments		Biota_method1		Biota_method2	
	Recoveries	MDLs	Recoveries	MDLs	Recoveries	MDLs
	(%)	(pg/g dw)	(%)	(pg/g ww)	(%)	(pg/g ww)
mirex	82±5.4	2.0	89±16	0.3	75±2.4	0.40
Dec 602	85±23	0.8	73±15	0.1	72±7.2	0.50
Dec 603	81±19	1.0	74±19	0.1	72±5.3	0.15
anti-Cl ₁₁ DP	89±7	1.0	84±10	0.08	79±1.1	0.10
syn-DP	84±27	1.0	81±19	0.1	89±8.0	0.50
anti-DP	97±23	1.0	84±11	0.1	84±7.8	2.0

26



27
28 **FIGURE S1.** Study area and sampling locations. Δ : sediment samples; \circ : gull samples; \square :
29 fish samples.
30
31



32
33 **FIGURE S2.** Stable nitrogen and carbon isotope values in organisms collected from Liaodong
34 Bay.

35
36
37
38
39
40
41
42
43
44
45
46
47
48
49